



# FAMILY PRAYER CHART

<p><b>M</b></p> <p>Morning</p> <hr/> <p>Evening</p> <hr/>	<p><b>T</b></p> <p>Morning</p> <hr/> <p>Evening</p> <hr/>	<p><b>W</b></p> <p>Morning</p> <hr/> <p>Evening</p> <hr/>	<p><b>Th</b></p> <p>Morning</p> <hr/> <p>Evening</p> <hr/>
<p><b>F</b></p> <p>Morning</p> <hr/> <p>Evening</p> <hr/>	<p><b>S</b></p> <p>Morning</p> <hr/> <p>Evening</p> <hr/>	<p><b>S</b></p> <p>Morning</p> <hr/> <p>Evening</p> <hr/>	



Miraculous things happen when families pray together - James E. Faust

# FAMILY PRAYER CHART



**M**  
Monday

Morning

---

Evening

---

**T**  
Tuesday

Morning

---

Evening

---

**W**  
Wednesday

Morning

---

Evening

---

**Th**  
Thursday

Morning

---

Evening

---

**F**  
Friday

Morning

---

Evening

---

**S**  
Saturday

Morning

---

Evening

---

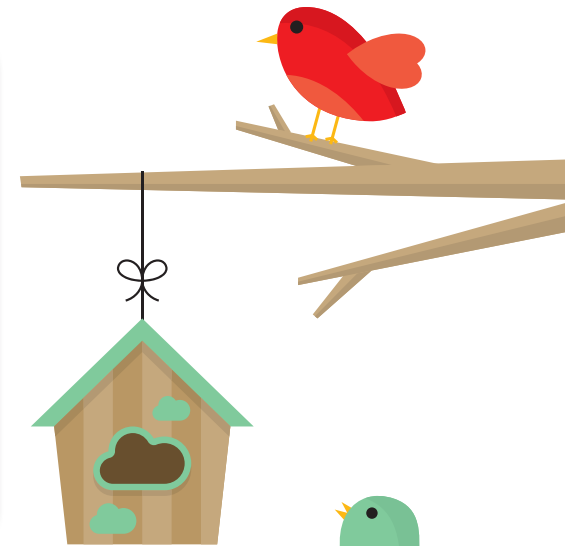
**S**  
Sunday

Morning

---

Evening

---



Miraculous things happen when families pray together - James E. Faust